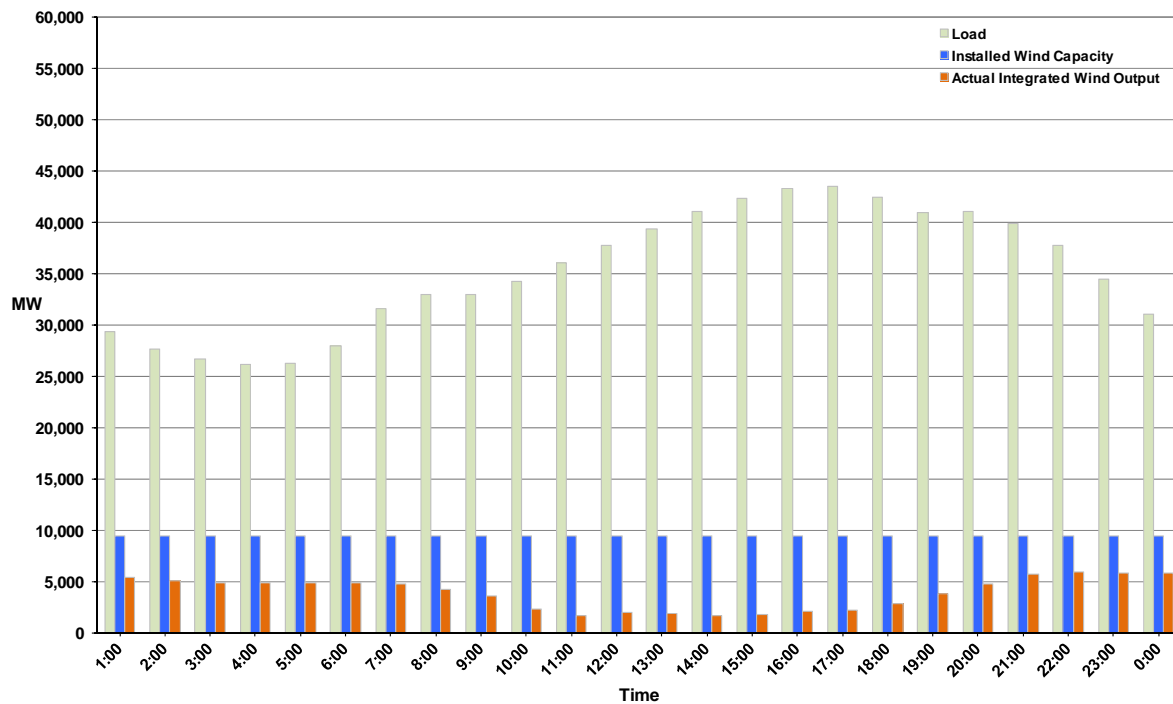




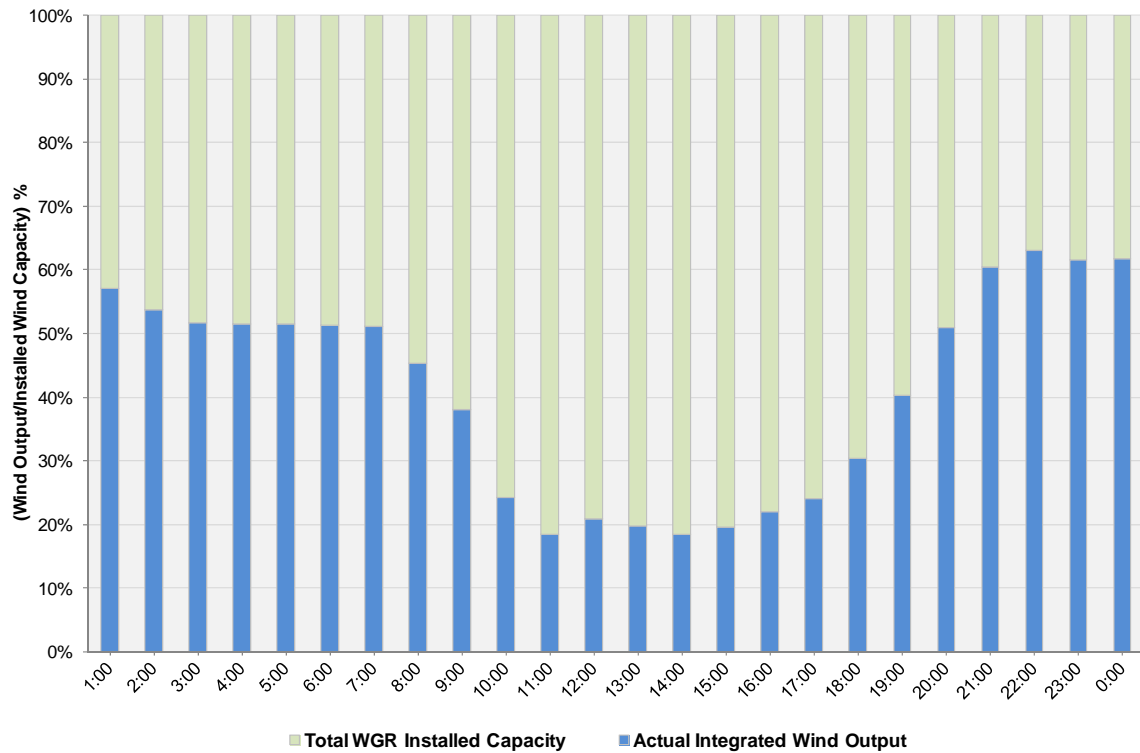
## ERCOT Grid Operations Wind Integration Report: 10/26/11

Peak Load	43,564 MW
Load Peak Hour	17
Wind over Peak	2,261 MW
Wind Record 10/07/11	7,400 MW
Max Wind Value	6,169 MW
Wind Peak Time	00:35
Wind Integration %	21.21%

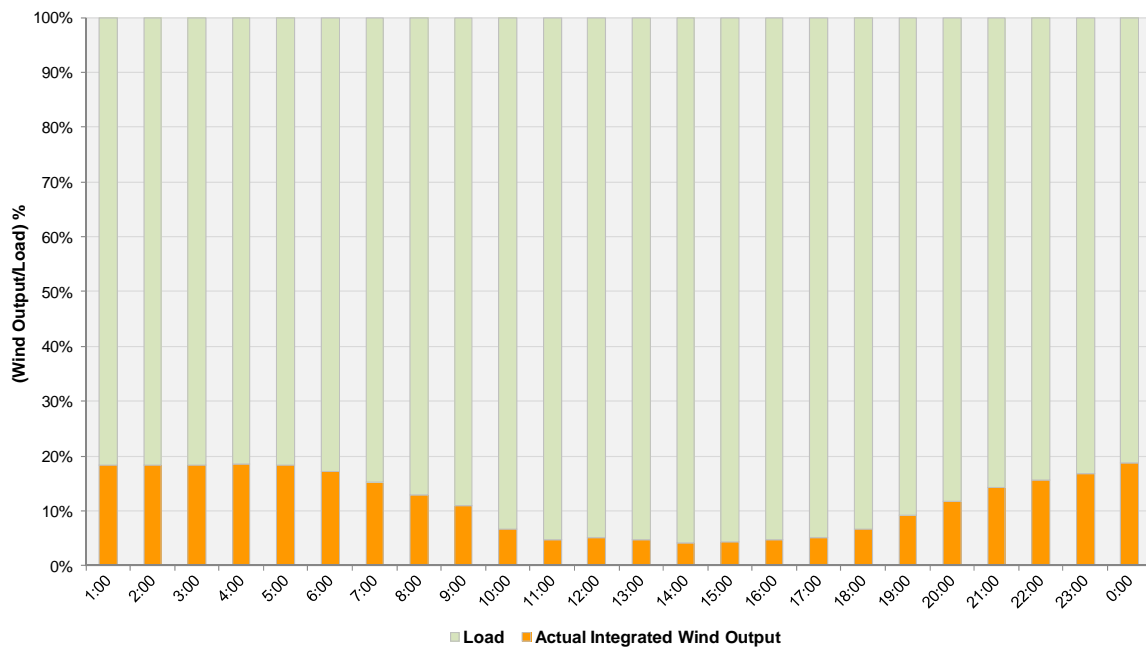
**Hourly Average Actual Load vs. Actual Wind Output  
10-26-2011**



**Actual Wind Output as a Percentage of the Total Installed Wind Capacity**  
**10-26-2011**



**Actual Wind Output as a Percentage of the ERCOT Load**  
**10-26-2011**



ERCOT Load vs. Actual Wind Output 10/19/2011 - 10/26/2011

